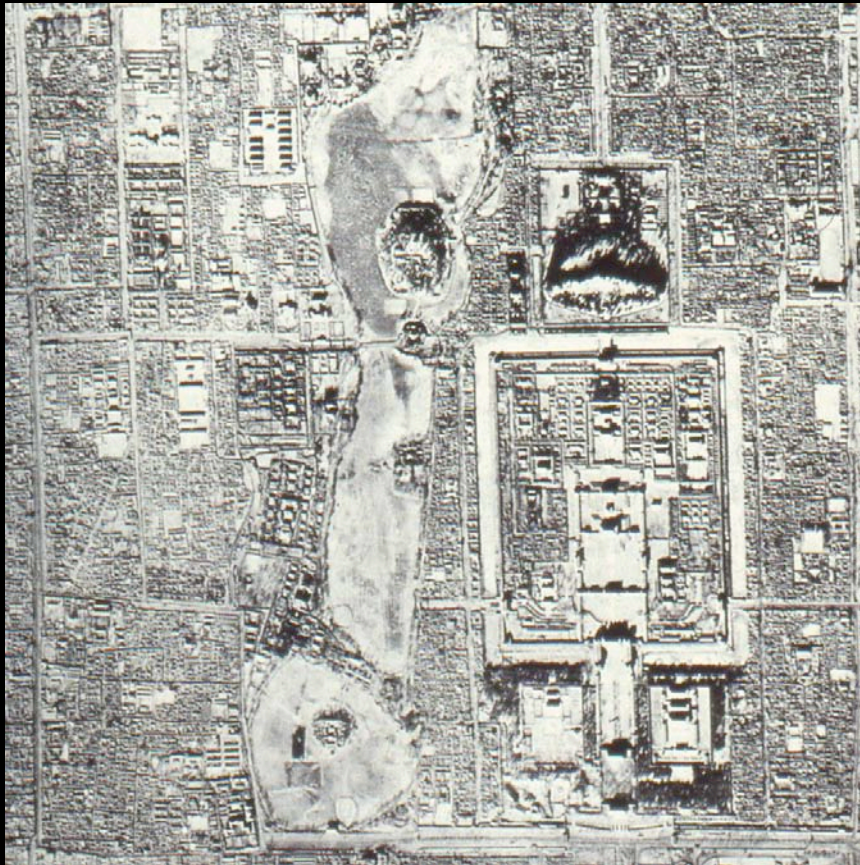


Tiananmen Square: Public Memory, Emblem, Monument

- How to change a feudal monument into a monument for the people?
- What defines the space of the square? Consider Forbidden City, Gate, Square







The Forbidden City



Great China Amusement Park, Beijing (questions of scale and ownership)



Tiananmen "Gate of Heavenly Peace" (January 2006)



Transforming the meaning of the Gate: State emblem featuring the Gate of Heavenly Peace

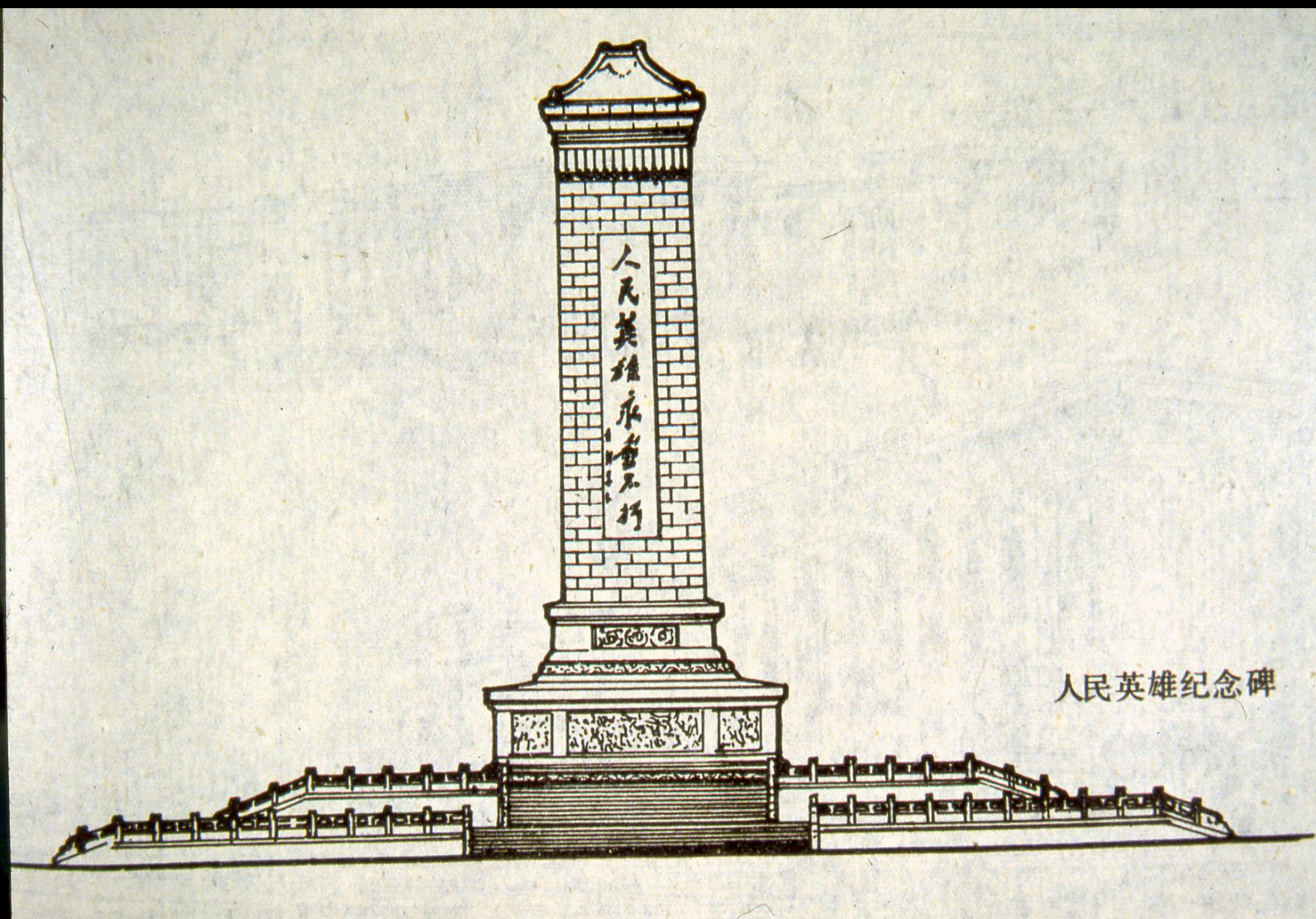


National Day Parade on Chang'an Avenue (which passes in front of the Gate)



The Square today, viewed from the east corner of the Forbidden City: Monument to the People's Heroes (cenotaph at center); Chairman Mao Mausoleum (south); Qianmen Gate (further south); Great Hall Of the People (west, behind the cenotaph in this photograph); to the east, next to the bus park in the foreground but not in the photograph, is the Museum of Revolutionary History





人民英雄纪念碑



Monument to the People's Heroes (1959), compare with Imperial stele





Monument to the People's
Heroes, north side facing
Tiananmen Gate "Long
Live the Victory of Chairman
Mao's Thought" inscribed
In Premier Zhou Enlai's
calligraphy



Monument, east side facing Museum of Revolution and History (historical progression begins on east side and moves clockwise, bas relief of Opium Wars on R; Taiping Rebellion on L)



Detail Monument, east side: 19th-century Opium Wars



Museum of History and Revolution (east side of square)



The Museum of the Chinese Revolution and History, by
Zhang Kaiji, 1959



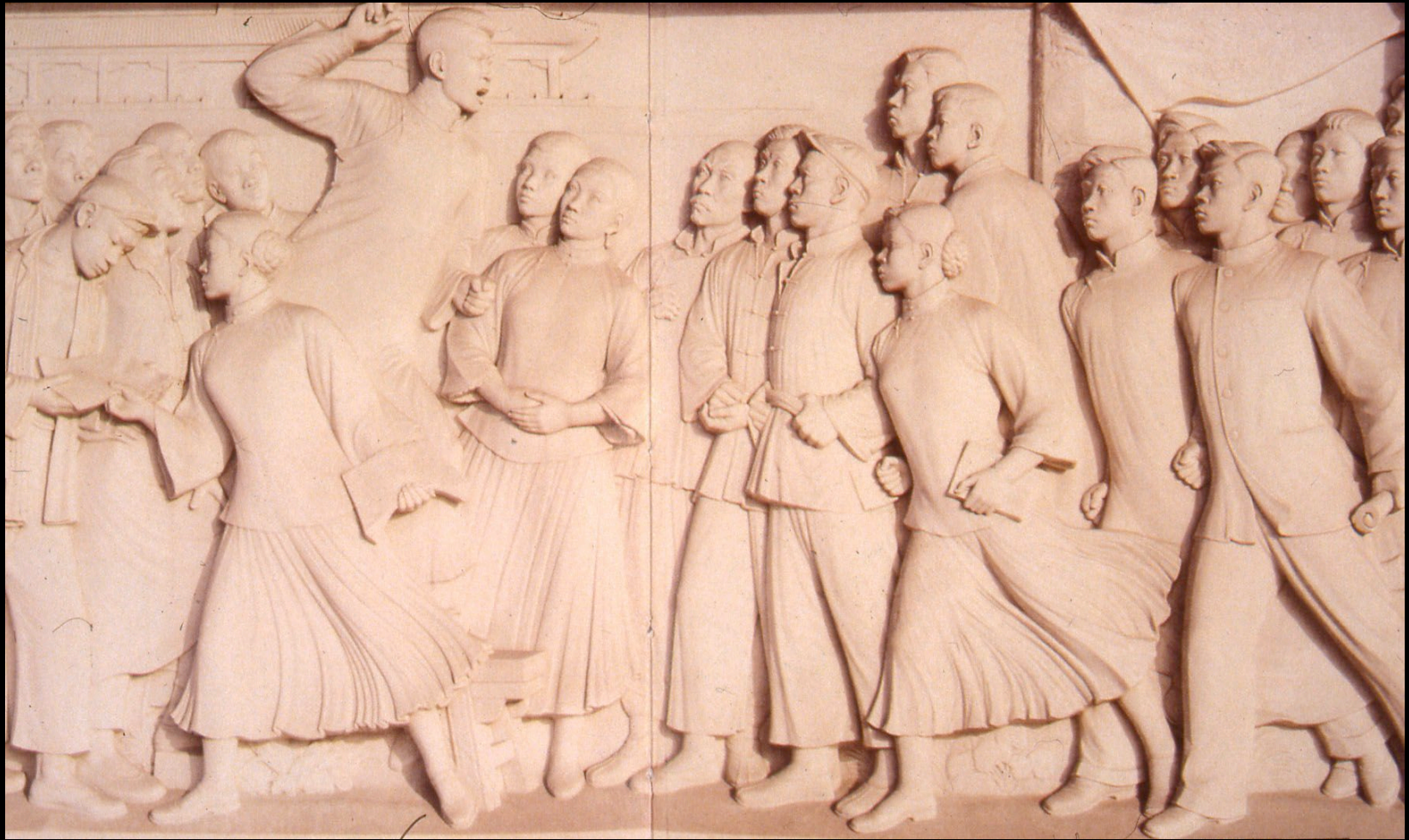
Measuring out time in front of the Museum of History and the Revolution: Countdown to the 2008 Olympics... (January 2006)



An earlier countdown to the return of Hong Kong to the PRC (July 1, 2007)



Monument, south side facing Mausoleum (L to R:
May 30th Movement, May 4th Movement, Wuchang Uprising)



Detail Monument, south side: May 4th Movement (students protest the Treaty of Versailles)



Chairman Mao Mausoleum, 1977





Planning the Mao Zedong Mausoleum



Lincoln Memorial, Washington, D.C. (Henry Bacon, 1915)



Ye Yushan, Zhang Songhe, Wang Keqing, Cao Chunsheng, Bai Lansheng, Sun Jiabin; tapestry behind statue by Huang Yongyu. Statue of Chairman Mao in North Hall of Mausoleum. (marble, 1978).





Huang Yongyu. Statue of Chairman Mao in North Hall of Mausoleum. (marble, 1978); Daniel Chester French's sculpture of Abraham Lincoln (1922)



Memorial Hall Group Sculptures. Collaborative work of 108 artists.
Cast concrete. 1978.









Monument, west side facing Great Hall of the People
(Nanchang Uprising 1927 on R, War Against Japan 1937-45
on L)



The Great Hall of the People, by Zhang Bo, 1959







Monument, north side facing Tiananmen (Liberation of Nanjing 1949)





The Museum of the Chinese Revolution and History, by
Zhang Kaiji, 1959



Beijing Railway Station by Yang Tingbao, 1958-59



The Great Hall of the People, by Zhang Bo, 1959



